

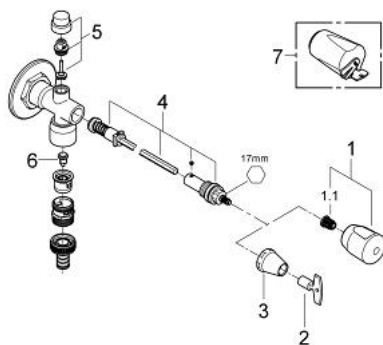
41 206 000 EUROTEC OUTSIDE WALL VALVE KIT 1/2"



DESCRIZIONE PRODOTTO

- Colour: cromo
- with safety unit type HD (pipe ventilating valve combined with non-return valve)
- frost-proof via automatic draining for each closing operation
- socket spanner and sanitary handle
- red brass valve seat
- installation depth 170 - 500 mm
- CU connection 15 mm and male thread 1/2"
- rotation lock
- through bore 35 mm
- con valvola di ritegno incorporata

41 206 000 EUROTEC OUTSIDE WALL VALVE KIT 1/2"



PARTIDIRICAMBIO , giugno 2006 – now

1: Manopola (Ordine n. 41002000)

1.1: Inserto a scatto (Ordine n. 4184200M)

2: CHIAVE (Ordine n. 02277000)

3: Cappuccio (Ordine n. 41006000)

4: Headpart Eurotec/Egatec 1/2" (Ordine n. 41024000)

5: Pipe-vent set (as of 2006) (Ordine n. 41014000)

6: Cono (Ordine n. 41835000)

7: Manopola (Ordine n. 41000000)*

* Accessori speciali